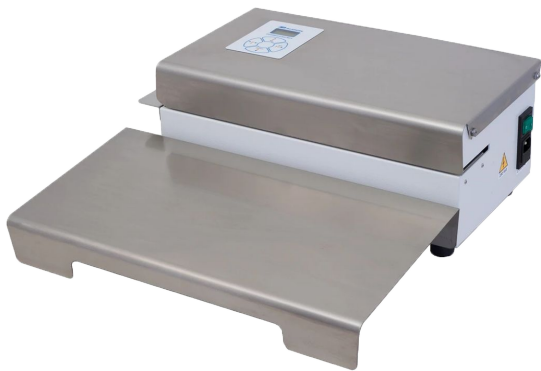


## Contimed Validatable Medical Band Sealers

### *For Sealing and Coding Medical Sterilization Pouches*

The Contimed family of tabletop, validatable medical band sealers offers a large selection of interface and control designs. These rotary sealers are designed for sealing and coding medical sterilization pouches, with no compressed air required. The versatile Contimed sealers are designed to effectively seal various pouch materials and thicknesses.

All models feature stainless steel covers and packages move from left to right. For completely reliable validation that is guaranteed the Contimed family of medical sealers are the preferred choice of medical packagers. The Contimed Validatable Band Sealers include a 2 year limited warranty.



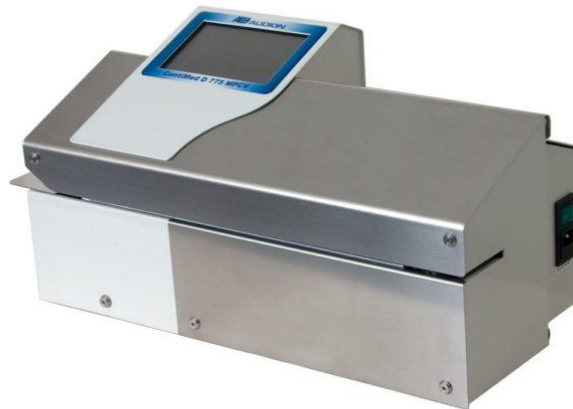
#### **Contimed D662**

The Contimed D662 is our basic model perfect for applications requiring full control and monitoring of sealing temperature for consistent seal integrity. A photocell detects when the pouch is introduced to automatically signal the Contimed to start. For user convenience and packaging performance, this machine comes standard with an easy-to-clean stainless steel work table that supports your packages during the seal process.



#### **Contimed D666**

The Contimed D666 offers real-time seal process parameter monitoring of temperature, pressure and speed. An alarm blocks operation when parameters are not met. A built-in matrix printer can be used to print: date, operator name, serial number and codes, directly on the pouches.



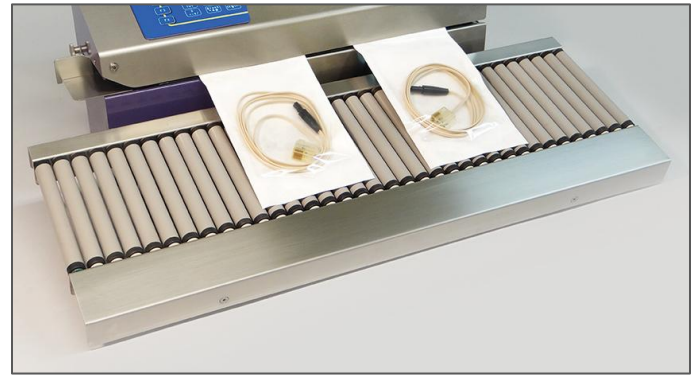
#### **Contimed D775**

The Contimed D775 MPCV is our most advanced model and features a color touch screen interface and highly advanced software, developed on a Windows platform. This model offers real-time seal process parameter monitoring of temperature,

pressure and speed. A built-in matrix printer can be used to print: date, operator name, serial number and barcode, directly on the pouches. Count on the Contimed 775 to seal all medical pouches in use today.

## Sealing features

- Automatic adjustment of sealing pressure
- Photocell controlled start signal
- 1/2" Wide Seal, 5 lines
- Adjustable bag guide for consistent seal positioning
- Temperature controller with digital readout to 200°C
- Audible alarm and block when seal parameters are not met
- Ports for USB and ethernet connectivity
- Designed to effectively package medical devices in a variety of bag materials



Optional roller support shelf available for all models for enhanced rotary sealing

## Specifications

Model	Contimed D665	Contimed D666	Contimed D775
Seal Width	1/2", 5-line	1/2", 5-line	1/2", 5-line
Validatable	Temperature	Temperature Speed Pressure	Temperature Speed Pressure
Seal Speed (max)	345" /minute	385" /minute	385" /minute
Seal Temperature (max)	max. 220°C	max. 200°C	max. 200°C
LCD Display	Touchpad 2-line digital display	Touchpad 4-line digital display	Touchscreen
Internal Matrix Printer	<input type="checkbox"/>	9 dots, 80 characters	18 dots, 2 lines, 120 characters, barcodes
Connectivity	1 USB port	2 USB ports, Ethernet	2 USB ports, Ethernet External Lan Traceable
Batch Counter	✓	✓	✓
Dimensions (WxDxH in)	19 x 10 x 7.5	22 x 11 x 9	25 x 12 x 13
Electrical	115v, 60Hz 230v, 50Hz special order	115v, 60Hz 230v, 50Hz special order	115v, 60Hz 230v, 50Hz special order

### Contact us today:

1 (800) 985-9570 ■ sales@pacmachinery.com



a PAC Machinery company

25 Tiburon Street, San Rafael CA 94901 ■ 1 (800) 985 -9570 ■ pacmachinery.com

Specifications subject to change without notice